

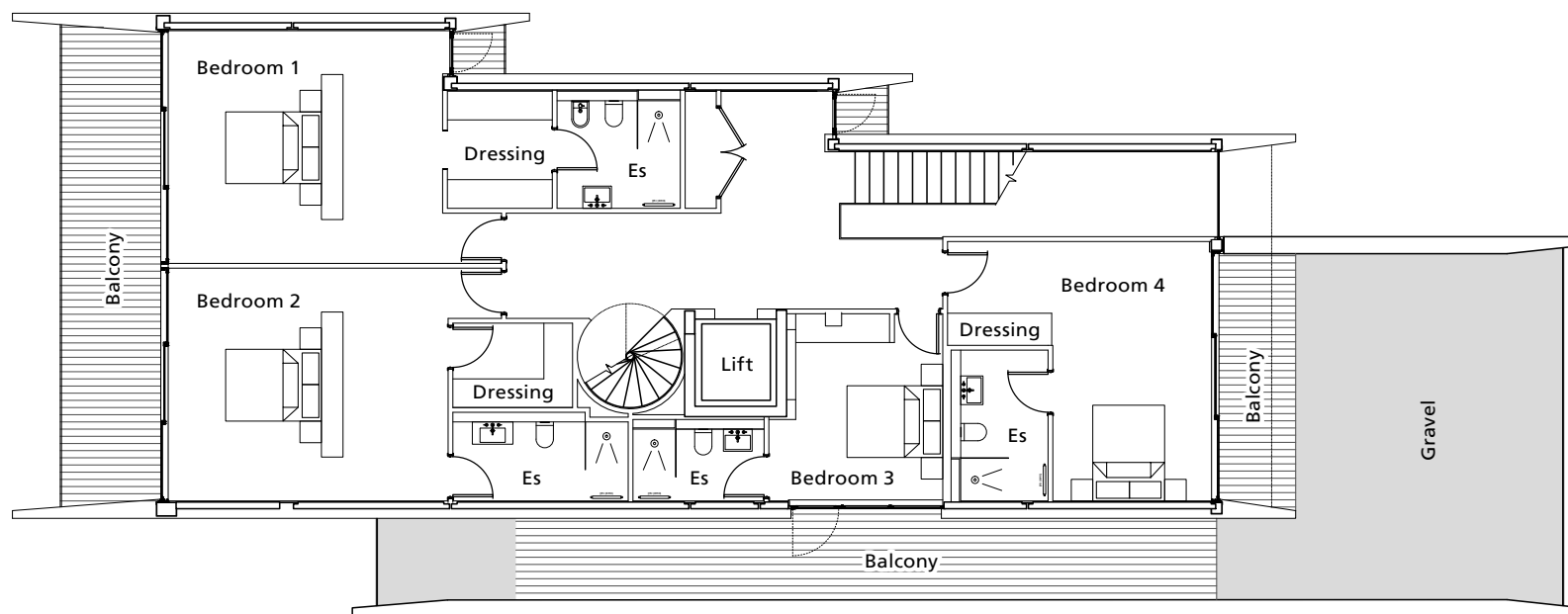


VANQUISH

Poole | Dorset

Vanquish, Pearce Avenue, Lilliput
 Approximate Gross Internal Area: 900 sq m / 9,645 sq ft inc. Garage

Second Floor



| | | |
|---------------|----------------|---------------|
| Bedroom 1 | 19'0" x 15'11" | 5.80m x 4.85m |
| Dressing Room | | |
| En-suite | 8'5" x 7'4" | 2.56m x 2.23m |
| Bedroom 2 | 19'3" x 16'0" | 5.87m x 4.88m |
| Dressing Room | | |
| En-suite | 16'4" x 11'0" | 4.98m x 3.35m |

| | | |
|-----------|----------------|---------------|
| Bedroom 3 | 13'2" x 11'11" | 4.01m x 3.63m |
| En-suite | 9'1" x 5'0" | 2.77m x 1.52m |
| Bedroom 4 | 18'3" x 17'10" | 5.56m x 5.44m |
| En-suite | 10'0" x 6'0" | 3.05m x 1.83m |

The dimensions quoted as given as a guide only at this stage and may change or vary during construction. Maximum dimensions are given in irregular shaped rooms.