

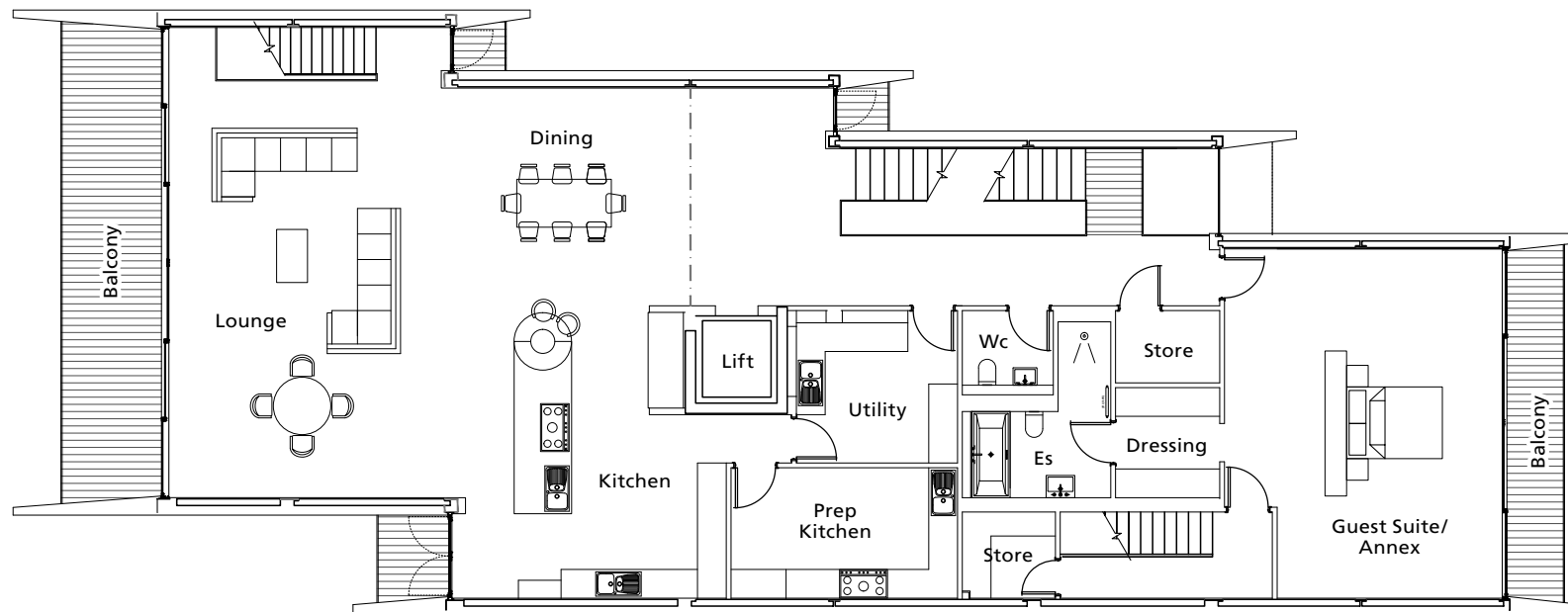


VANQUISH

Pooler | Dorset

Vanquish, Pearce Avenue, Lilliput
 Approximate Gross Internal Area: 900 sq m / 9,645 sq ft inc. Garage

First Floor



| | | |
|----------------|----------------|----------------|
| Lounge | 32'2" x 18'10" | 9.81m x 5.74m |
| Kitchen/Dining | 34'10" x 26'3" | 10.62m x 8.00m |
| Prep Kitchen | 15'9" x 8'11" | 4.80m x 2.72m |
| Utility | 10'8" x 9'8" | 3.25m x 2.95m |
| Guest Bedroom | 23'11" x 19'0" | 7.29m x 5.79m |
| En-suite | 12'1" x 10'1" | 3.68m x 3.07m |

Dressing Room
 Storage Rooms

The dimensions quoted as given as a guide only at this stage and may change or vary during construction. Maximum dimensions are given in irregular shaped rooms.