

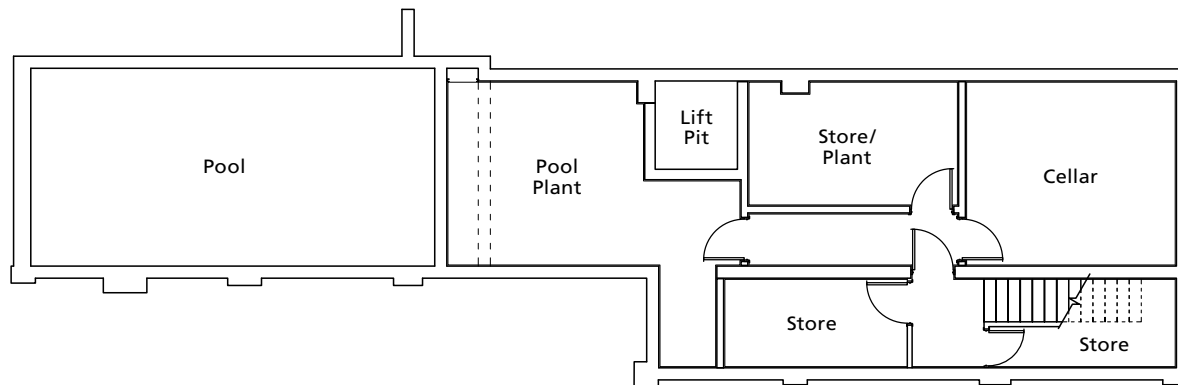


VANQUISH

Poole | Dorset

Vanquish, Pearce Avenue, Lilliput
Approximate Gross Internal Area: 900 sq m / 9,645 sq ft inc. Garage

Lower Ground Floor



Cellar	14'2" x 12'5"	4.32m x 3.79m
Store Room	12'1" x 5'10"	3.68m x 1.78m
Plant Rooms		
Additional storage rooms		

*The dimensions quoted as given as a guide only at this stage
and may change or vary during construction.
Maximum dimensions are given in irregular shaped rooms.*