



- Two double bedrooms
- Kitchen/breakfast room
- Spacious entrance hall
- Single lock up garage
- Third floor apartment

Flat 6 Casterbridge Court

LOWER PARKSTONE

£299,950

Welcome to Flat 6 Casterbridge Court ...

A purpose built third floor flat with balcony and distant panoramic sea views, two double bedrooms, two bathrooms and offered with vacant possession.

ACCOMODATION

Two double bedrooms, two bathrooms one being en-suite, fitted wardrobes, lounge, separate kitchen/breakfast room, two balconies, one enclosed and one open with distant sea views.

The property is situated in Lower Parkstone within a stone's throw of Parkstone train station and Ashley Cross with its array of shops bars and restaurants.

Apartment 6 is accessed via passenger lift or stairs and is situated on the third floor. The apartment runs front to back with the rear view over the communal gardens and the front facing view over Lower Parkstone and Poole towards the sea.

Internally the property comprises of two double bedrooms, spacious entrance hall, two bathrooms (one being en-suite), lounge, kitchen/ breakfast room with integrated oven and hob, fridge/freezer.

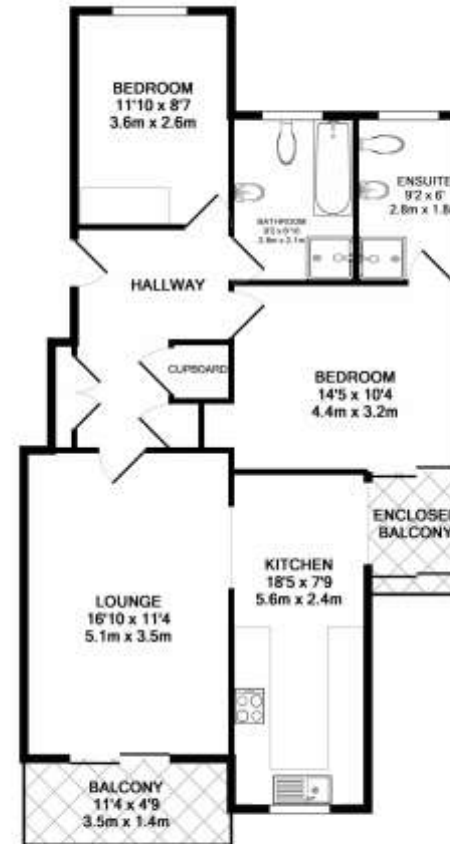
Features of the property include gas fired central heating, double glazing, single lock up garage in block with parking space in front of this along with visitor parking.

Maintenance Details

Leasehold: 999 years from 1990

Ground rent: Peppercorn

Service charge £910 payable half yearly December and June.



TOTAL APPROX. FLOOR AREA 793 SQ. FT. (73.6 SQ. M.)
Whilst every attempt has been made to ensure the accuracy of the floor plan contained here, measurements of doors, windows, rooms and any other items are approximate and no responsibility is taken for any error, omission, or mis-statement. This plan is for illustrative purposes only and should be used as such by any prospective purchaser. The services, systems and appliances shown have not been tested and no guarantee as to their operability or efficiency can be given.
Made with Netplan ©2018



Viewing Strictly by appointment through Lloyds.

VIEWING 7 DAYS A WEEK Ref: 3164

These particulars are prepared with all due care but their accuracy cannot be guaranteed nor should details contained herein form part of any contract. We would advise that you independently verify these details before signing any contact.

Lloyds Property Group

32 Haven Road, Canford Cliffs, Poole, Dorset BH13 7LP 01202 701800

264 Sandbanks Road, Lilliput, Poole, Dorset BH14 8HA 01202 708044

LLOYDS
PROPERTY GROUP